

NOTES ON GEOGRAPHIC DISTRIBUTION

**Amphibia, Anura, Leiuperidae, *Physalaemus erythros* Caramaschi, Feio and Guimarães-Neto, 2003: Distribution extension**

Délio Baêta<sup>1\*</sup> and Douglas Henrique da Silva<sup>2</sup>

<sup>1</sup>Universidade Federal do Rio de Janeiro, Museu Nacional, Departamento de Vertebrados, Herpetologia.  
CEP 20940-040. Rio de Janeiro, RJ, Brazil.

<sup>2</sup>Centro Universitário Izabela Hendrix, Graduação em Ciências Biológicas.  
CEP 30160-010. Belo Horizonte, MG, Brazil.

\* Corresponding author. E-mail: deliobaeta@gmail.com

The Neotropical frog genus *Physalaemus* Fitzinger, 1826 currently comprises 42 species (Frost 2009) divided into seven species groups: *P. cuvieri* group, *P. signifer* group, *P. albifrons* group, *P. deimaticus* group, *P. gracilis* group, *P. henselii* group, and *P. olfersii* group (Nascimento et al. 2005). Species of this genus occur from southern Mexico to northern Argentina (Frost 2009). *Physalaemus erythros* was recently described (Caramaschi et al. 2003) based on one male and two female individuals, and currently only eight specimens are known (Appendix 1). Recently, Baêta et al. (2007) described the tadpole, advertisement call, and provided some notes on the natural history of *P. erythros*.

On 30 October 2008, we collected a gravid female of *P. erythros*, snout-vent length 23.3 mm (Figure 1), at the edge of *Córrego Verruguinha*, *Reserva Particular do Patrimônio Natural Serra do Caraça (RPPN Serra do Caraça)*, municipality of Catas Altas (20°08'28" S, 43°28'5" W; 1676 m above sea level), state of Minas Gerais. The habitat is a small river in an altitudinal rocky field plateau (a typical Brazilian *campo rupestre*). The river has a rocky bed and forms some pools and small waterfalls. The sparse vegetation consists of small trees and grasses. Other species occurring in the area are *Bokermannohyla martinsi* (Bokermann, 1964), *Vitreorana eurygnatha* (A. Lutz, 1925), and *Iscnocnema* aff. *lactea*.



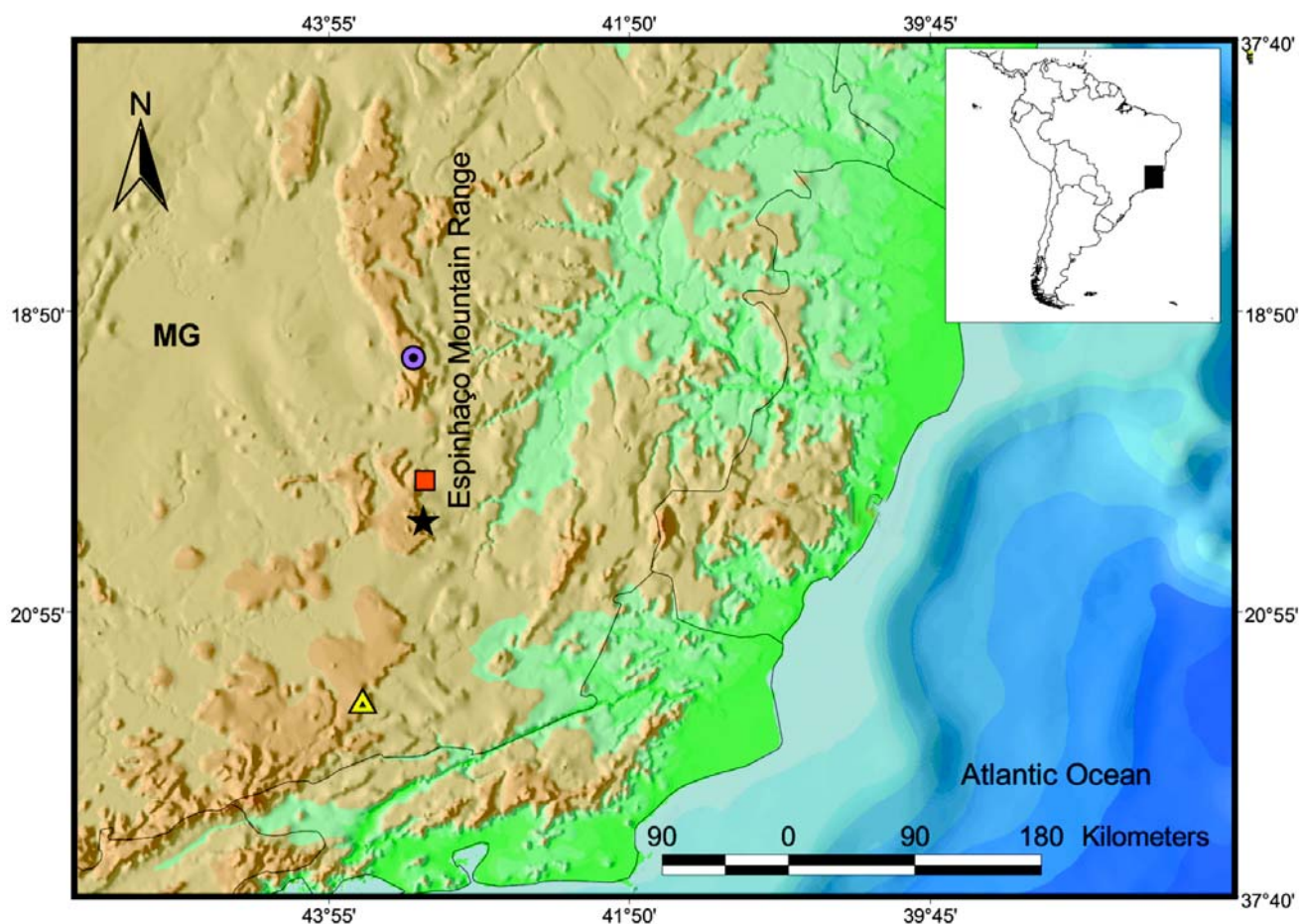
**Figure 1.** Adult female of *Physalaemus erythros* (MNRJ 55001; SVL = 23.3 mm) from RPPN Serra do Caraça, municipality of Catas Altas, state of Minas Gerais, southeastern Brazil. Photo by José P. Pombal Jr.

The collected specimen was compared against type-specimens, and deposited in the collection of *Museu Nacional*, Rio de Janeiro (MNRJ 55001). This is the first record outside the type-locality and extends the distribution of *P. erythros* about 33 km (straight-line distance) northwards (Figure 2). It suggests that this species may be typical of *campo rupestre*.

The anuran fauna from *RPPN Serra do Caraça* consists of 43 reported species (Canelas and Bertoluci 2007), including three *Physalaemus* species: *Physalaemus cuvieri* (*P. cuvieri* species group), *P. evangelistai* (*P. gracilis* species group), and *Physalaemus* aff. *olfersii* (*P. olfersii*

species group).

Nascimento et al. (2005) reviewed the genus *Physalaemus* and proposed the *Physalaemus deimaticus* species group to include *P. deimaticus*, *P. erythros*, and *P. rupestris*. Up to the present study, these three species were known only from their type-localities (Figure 2). Several new records have recently increased the distributional range of species with restricted distribution in Brazil (e.g. Araújo et al. 2007; Targino and Wild 2009). The new record of *P. erythros*, close to its type-locality, suggests that this species, like others, may have a greater distribution than currently known.



**Figure 2.** Geographic distribution of *Physalaemus deimaticus* species group in the state of Minas Gerais (MG). Star: *P. erythros* (type-locality); red square: new record of *P. erythros* (*RPPN Serra do Caraça*); purple circle: *P. deimaticus* (Jaboticatubas, now Santana do Riacho: Sazima and Caramaschi 1986); yellow triangle: *P. rupestris* (Lima Duarte, Ibitipoca: Caramaschi et al. 1991).

**Acknowledgements:** We are grateful to Ana Carolina C. Lourenço, José P. Pombal Jr. (MNRJ) and Rafael de Sá (University of Richmond) for reviewing the manuscript. Father Wilson Belloni, Father Lauro Palú, Aline Cristine L. Abreu for providing logistic support in *RPPN Serra do Caraça*. João Júlio for the information on the trail of *Córrego Verruguinha*. José P. Pombal Jr. for pictures of *Physalaemus erythros*. *Universidade Federal do Rio de Janeiro*, *FAPERJ*, and *FAPESP* provided financial support. DB thanks to *CNPq* for the fellowships granted.

**Literature Cited**

- Araújo, C.O., T.H. Condez and C.F.B. Haddad. 2007. Amphibia, Anura, *Phyllomedusa ayeaye* (B. Lutz, 1966): Distribution extension, new state record, and geographic distribution map. *Check List* 3(2): 156-158.
- Baêta, D., A.C.C. Lourenço and L.B. Nascimento. 2007. Tadpole and advertisement call of *Physalaemus erythros* Caramaschi, Feio & Guimarães-Neto, 2003 (Amphibia, Anura, Leiuperidae). *Zootaxa* 1623: 39-46.
- Canelas, M.A.S. and J. Bertolucci. 2007. Anurans of the Serra do Caraça, southeastern Brazil: species composition and phenological patterns of calling activity. *Iheringia, Série Zoologia* 97(1): 21-26.
- Caramaschi, U., L.C.C. Carcerelli and R. N. Feio. 1991. A new species of *Physalaemus* (Anura: Leptodactylidae) from Minas Gerais, Southeastern Brazil. *Herpetologica* 47(2): 148-151.
- Caramaschi, U., R.N. Feio and A.S. Guimarães-Neto. 2004. A new, brightly colored species of *Physalaemus* (Anura: Leptodactylidae) from Minas Gerais, Southeastern Brazil. *Herpetologica* 59(4): 519-524.
- Frost, D.R. 2009. Amphibian Species of the World: an Online Reference. Version 5.3 (12 February, 2009). Electronic Database accessible at <http://research.amnh.org/herpetology/amphibia/>. American Museum of Natural History, New York, USA. Captured on 20 August 2009.
- Nascimento, L.B., U. Caramaschi and C.A.G. Cruz. 2005. Taxonomic review of the species groups of the genus *Physalaemus* Fitzinger, 1826 with revalidation of the genera *Engystomops* Jimenez-de-La-Espada, 1872 and *Euphemphix* Steindachner, 1863 (Amphibia, Anura, Leptodactylidae). *Arquivos do Museu Nacional* 63(2): 297-320.
- Sazima, I. and U. Caramaschi. 1986. Descrição de *Physalaemus deimaticus*, sp. n., e observações sobre comportamento deimático em *P. nattereri* (Steind.) - Anura, Leptodactylidae. *Revista de Biologia* 13(1): 91-101.
- Targino, M. and E. Wild. 2009. Amphibia, Anura, Microhylidae, *Hyophryne histrio*: Distribution extension. *Check List* 5(1): 24-26.

Received: April 2009

Revised: August 2009

Accepted: October 2009

Published online: October 2009

Editorial responsibility: Diego Baldo

**Appendix 1.** Specimens examined. The acronyms are LZV (*Laboratório de Zoologia dos Vertebrados*, Ouro Preto) and MNRJ (*Museu Nacional*, Rio de Janeiro). *Physalaemus erythros*: Brazil: state of Minas Gerais, municipality of Ouro Preto, *Parque Estadual do Itacolomi, Lagoa Seca*: MNRJ 27986 (Holotype), MNRJ 27539, 30608 (Paratypes), MNRJ 46694, LZV 272A, 547A, 810A, 1265A. Municipality of Catas Altas, *RPPN Serra do Caraça, Córrego do Verruginha*: MNRJ 55001.